



**Chromai**<sup>®</sup>

- 科诺美 -



**Leaps Pro**

Ultra-High Performance Liquid  
Chromatography System Pro

UHPLC



Innovation for Better Life

# Leaps Pro

Ultra-High Performance Liquid Chromatography System Pro

The right choice for high efficiency injection needs in enterprise laboratories

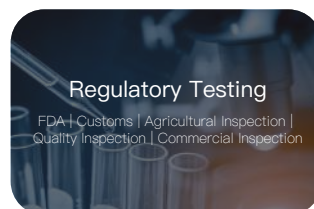
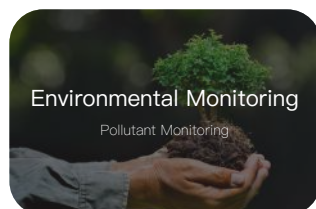
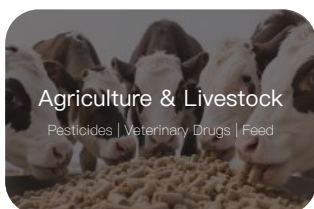


High Stability

High Throughput

Non-destructive Injection

Precisely meets customers' differentiated analytical needs



# The UHPLC standard for analytical laboratories: efficient, durable, and cost-controllable

---

## An ultra-high-efficiency application experience

- Maximum pressure up to 10,500 PSI (720 bar), greatly improving analytical efficiency over conventional systems
  - High stability at lower flow rates enables long-term, stable, and accurate operation even at low ratios
  - Pressure pulsation suppression technology with pulsation below 10 PSI
  - Standard configuration includes post-run flushing and needle-wash solvent degassing systems
  - Hand-tightened zero-dead-volume tubing minimizes extra volume to the greatest extent
- 



## Achieves smaller volume handling and non-destructive injection

- Full-loop autosampler with a minimum injection volume of 0.1  $\mu\text{L}$ , better suited for small-volume and trace analysis while meeting non-destructive injection requirements
  - Standard 4x54 vial tray, compatible with 4x96 well plates for higher throughput
  - Contact-type integrated high-efficiency cooling system with a temperature range of 4°C–40°C
  - Supports cross-sequence operation, allowing multiple projects to run in order without manual intervention
- 



## A precise and stable temperature control system

- Large-capacity column oven capable of accommodating four 300 mm chromatographic columns
  - Forced air circulation and an optimized thermal airflow duct system make the temperature field more uniform
  - Semiconductor temperature control with a broad range of 4°C–85°C
  - Supports a variety of components such as 10-port and 6-port valves, enabling dual-column and multi-column switching
- 



## Broader detector compatibility

- Compatible with UVD, DAD, FLD, ELSD, RID, and more
  - Supports MS integration
- 

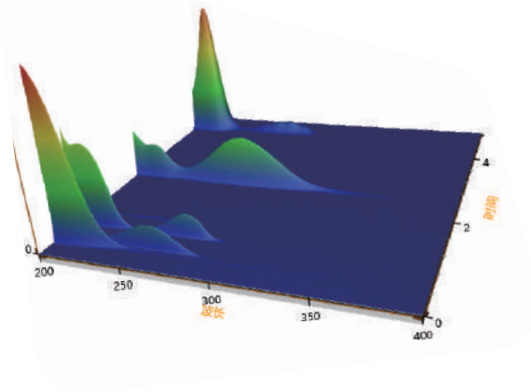


# Superior Performance, Reliable Results

## ● Diode Array Detector (DAD)



- Pixels: 1024 pixels
- Wavelength Range: 190–800 nm
- Slit Width: 1.2 nm / 6 nm
- Monitoring Channels: 12 channels simultaneously
- Additional Functions: 3D spectra, peak purity
- Flow Cell: Max path length 60 mm



## ● UV-Vis Detector



- Optical Design: Automatic switching
- Wavelength Range: 190–900 nm
- Acquisition Rate: Up to 100 Hz
- Linear Range: 2.5 AU
- Standard Features: Wavelength time program, switching, stop-flow scanning
- Maintenance: Easy lamp replacement

## ● Fluorescence Detector

- Sensitivity: New optical design
- Stray Light Suppression: Excellent S/N
- Wavelength Range: 200–750 nm / 900 nm
- Sampling Rate: Up to 100 Hz



# EyouLab Intelligent Data System

Enhances laboratory efficiency with greater accuracy and speed  
Effectively reduces operational costs and risks



EyouLab CDS

EyouLab fully complies with FDA 21 CFR Part 11, GMP, GLP, and other regulatory requirements. It offers multiple deployment options, including standalone, networked, and medical versions, with multi-lingual support covering everything from sample preparation to precision medicine. Built on dozens of proprietary technologies, it combines a “smart guided interface + cloud-based data management” to simplify complex experimental operations, ensure data integrity and accuracy, and significantly boost lab capabilities and efficiency—accelerating the transition to intelligent laboratories.



Control Panel

Multi-channel Data Acquisition

Automated Sequences

Instrument Monitoring

Audit Trail

Data File List

Complete Attribute Parameters

Powerful Data Processing

Multi-mode Data Display

Standalone Operation

Remote Access

Archiving Management

Audit Trail

Risk Management

Unified Data Management and Retrieval

Full Regulatory Compliance

Ensures Physical Security of Electronic Data

Easy Remote Access Control

Open-access Network Analysis System

Simple Installation, Startup, and Maintenance

Each acquisition terminal can control up to 4 systems



## Leaps

UHPLC System



## Leaps Pro

High Throughput UHPLC System



## Frontier

UHPLC System

### Analytical



## Leaps 2D

2D UHPLC System

2D System



## Leaps Pro Bio

Bio-Inert LC System

Bio-Inert



## Leaps Prep

Preparative LC System

Preparative

Website: [www.chromai.com](http://www.chromai.com)

### Chromai · Beijing

Address: 5th Floor, Building 10, Liandong U Valley · Lanbei Technology Park, No. 3 Xixing Road, Shunyi District, Beijing, China

Tel: (86-10)80429960

### Chromai · Suzhou

Address: 5th Floor, Building 5, No. 1268 Jiaotong Road, Wujiang District, Suzhou, Jiangsu, China

Tel: (86-512)63226066

Email: [contact@chromai.com](mailto:contact@chromai.com)



WeChat  
Official Account



LinkedIn  
Official Account