



Chromai[®]

— 科诺美 —



Leaps Pro Bio

Biological Inert Ultra High
Liquid Chromatography System

Bio-Inert UHPLC



Innovation for Better Life

Leaps Pro Bio

Biological Inert Liquid Chromatography System

Enabling Efficient Bio-Sample Analysis



Biologically Inert Sample Flow Path

Reduced Metal Adsorption

Bio-Compatible Materials

Suitable for Biological Samples & Extreme pH Conditions

Precisely meets diverse analytical requirements of customers

Biopharma & Pharmaceuticals

Biologics | Chemical Drugs
| Synthetic Biology

Research & Education

University Laboratories
| Research Institutes

Food Safety

Nutritional Components

Agriculture & Livestock

Pesticides | Veterinary Drugs | Feed

Chemical Materials

Cosmetic Active Intermediates

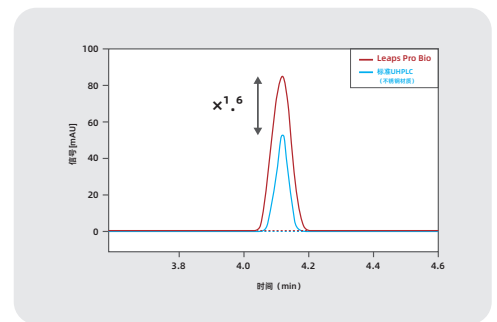
Regulatory Testing

FDA | Customs
| Agricultural Inspection
| Quality Inspection
| Commercial Inspection

Inert Flow Path · Zero Adsorption · Reliable Performance under Extreme pH

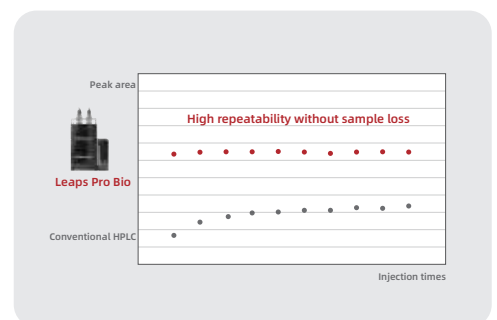
Fully Inert and Corrosion-Resistant Flow Path: Accurate Analysis with Reliable Operation

- The flow path is constructed from corrosion-resistant materials, enabling long-term stable operation even in high-salt or extreme pH environments, effectively preventing corrosion and clogging.
- Reduced Loss of Metal-Sensitive Analytes: Minimizes non-specific adsorption and sample loss without requiring complex mobile phases or tedious passivation procedures, improving data quality.
- Fully Bio-Inert System Configuration: Includes bio-inert pumps, flow paths, injection valves, needles, and flow cells, ensuring complete biological inertness throughout the system.
- Standard Plunger Cleaning Peristaltic Pump: Effectively reduces salt crystallization and ensures stable pump operation.
- Hand-Tight Zero Dead Volume Tubing Kit: Prevents diffusion and band broadening, ensuring accurate analytical results.



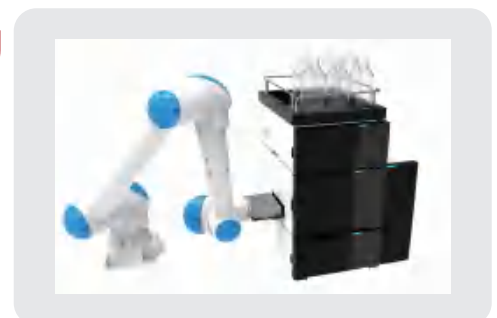
Supporting Multiple Applications and Analytical Options

- Suitable for various chromatographic modes including reversed-phase, ion exchange, size exclusion, and hydrophobic interaction chromatography.
- Applications include monoclonal / bispecific antibody purity analysis, mRNA vaccine impurity detection, and quality control of cell therapy products.



High-Precision Automated Sample Handling

- Optional integration with a high-precision robotic arm module, combined with recognition and path-planning algorithms, enabling fully automated workflows including automatic tray replacement and precise rack positioning.

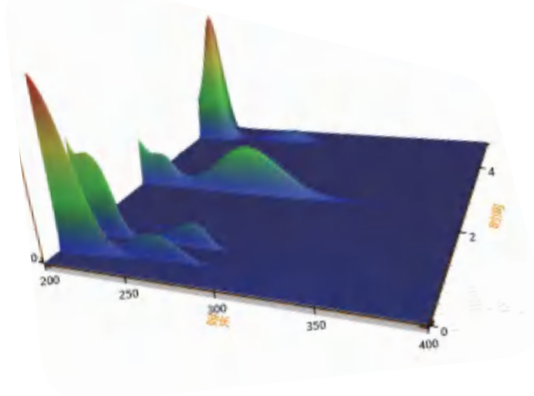


Superior Performance, Reliable Results

● Diode Array Detector (DAD)



- Pixels: 1024 pixels
- Wavelength Range: 190–800 nm
- Slit Width: 1.2 nm / 6 nm
- Monitoring Channels: 12 channels simultaneously
- Additional Functions: 3D spectra, peak purity
- Flow Cell: Max path length 60 mm



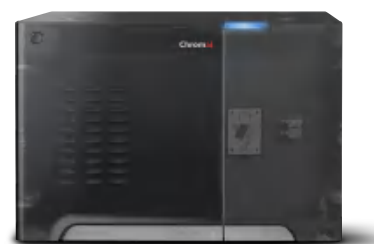
● UV-Vis Detector



- Optical Design: Automatic switching
- Wavelength Range: 190–900 nm
- Acquisition Rate: Up to 100 Hz
- Linear Range: 2.5 AU
- Standard Features: Wavelength time program, switching, stop-flow scanning
- Maintenance: Easy lamp replacement

● Fluorescence Detector

- Sensitivity: New optical design
- Stray Light Suppression: Excellent S/N
- Wavelength Range: 200–750 nm / 900 nm
- Sampling Rate: Up to 100 Hz



EyouLab Intelligent Data System

Enhances laboratory efficiency with greater accuracy and speed
Effectively reduces operational costs and risks



EyouLab CDS

EyouLab fully complies with FDA 21 CFR Part 11, GMP, GLP, and other regulatory requirements. It offers multiple deployment options, including standalone, networked, and medical versions, with multi-lingual support covering everything from sample preparation to precision medicine. Built on dozens of proprietary technologies, it combines a “smart guided interface + cloud-based data management” to simplify complex experimental operations, ensure data integrity and accuracy, and significantly boost lab capabilities and efficiency—accelerating the transition to intelligent laboratories.

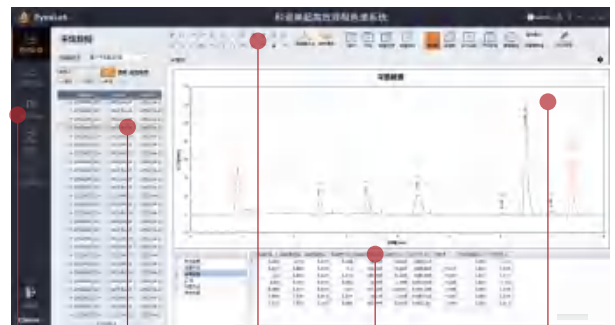


Control Panel

Multi-channel Data Acquisition

Automated Sequences

Instrument Monitoring



Audit Trail

Data File List

Powerful Data Processing

Complete Attribute Parameters

Multi-mode Data Display

Standalone Operation

Remote Access

Archiving Management

Audit Trail

Risk Management

Unified Data Management and Retrieval

Full Regulatory Compliance

Ensures Physical Security of Electronic Data

Easy Remote Access Control

Open-access Network Analysis System

Simple Installation, Startup, and Maintenance

Each acquisition terminal can control up to 4 systems



Leaps

UHPLC System



Leaps Pro

High Throughput UHPLC System



Frontier

UHPLC System

Analytical



Leaps 2D

2D UHPLC System

2D System



Leaps Pro Bio

Bio-Inert LC System

Bio-Inert



Leaps Prep

Preparative LC System

Preparative

Website: www.chromai.com

Chromai · Beijing

Address: 5th Floor, Building 10, Liandong U Valley · Lanbei
Technology Park, No. 3 Xixing Road, Shunyi District, Beijing, China

Tel: (86-10)80429960

Chromai · Suzhou

Address: 5th Floor, Building 5, No. 1268 Jiaotong Road, Wujiang
District, Suzhou, Jiangsu, China

Tel: (86-512)63226066

Email: contact@chromai.com



WeChat
Official Account



LinkedIn
Official Account