



Chromai[®]

- 科诺美 -



Leaps Prep

Preparative Liquid
Chromatography System

UHPLC



Innovation for Better Life

Leaps Prep

Preparative Liquid Chromatography System

Simple and flexible preparative purification



Stable Separation

Flexible Expansion

Full-Auto Process

Tailored to unique analytical demands



Biopharmaceuticals & Pharmaceuticals

Biologics|chemical drugs|
TCM|synthetic biology



Scientific Research & Education

University laboratories|
research institutes



Agriculture & Animal Husbandry

Pesticides|veterinary drugs|
feed

Auto Prep System: Simplifying Complex Processes

Solvent Delivery System

(Designed for High-Pressure Preparative Applications)

- Flow Rate Range: 0–150 mL/min
 - Pressure Range: 0–400 Bar
 - Solvent Support: Up to four solvents
-



Sample Introduction

(Efficient and Convenient)

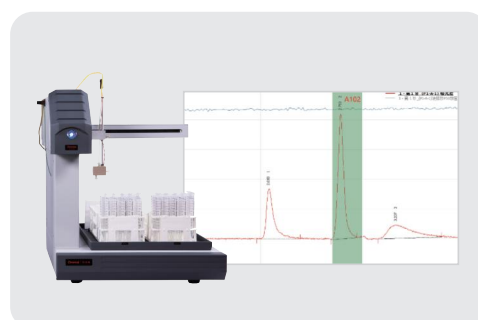
- Injection Modes: Supports 5 mL large-volume and multiple injection modes
 - Sample Tray Options: Compatible with 2/5/7 mL vials
 - Loading Capacity: Supports mg–g scale
 - Sample Compartment: Optional cooling
 - Upgrade Support: Upgradable to 2D preparative LC
-



Fraction Collection System

(Fully Automated Workflow)

- Automated injection and fraction collection
 - Collection Criteria: Threshold, slope, peak area
 - Rack Options: 30 mm, 16 mm, 13 mm
-

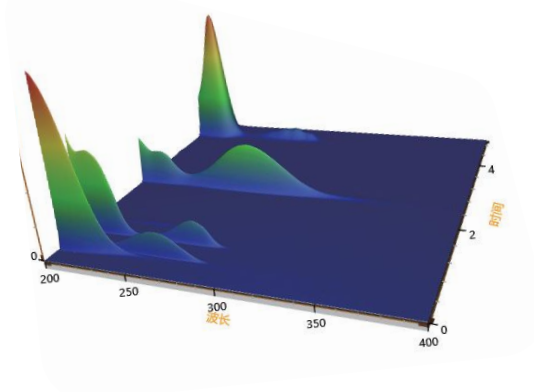


Superior Performance, Reliable Results

● Diode Array Detector (DAD)



- Pixels: 1024 pixels
- Wavelength Range: 190–800 nm
- Slit Width: 1.2 nm / 6 nm
- Monitoring Channels: 12 channels simultaneously
- Additional Functions: 3D spectra, peak purity
- Flow Cell: Max path length 60 mm



● UV-Vis Detector



- Optical Design: Automatic switching
- Wavelength Range: 190–900 nm
- Acquisition Rate: Up to 100 Hz
- Linear Range: 2.5 AU
- Standard Features: Wavelength time program, switching, stop-flow scanning
- Maintenance: Easy lamp replacement

● Fluorescence Detector

- Sensitivity: New optical design
- Stray Light Suppression: Excellent S/N
- Wavelength Range: 200–750 nm / 900 nm
- Sampling Rate: Up to 100 Hz



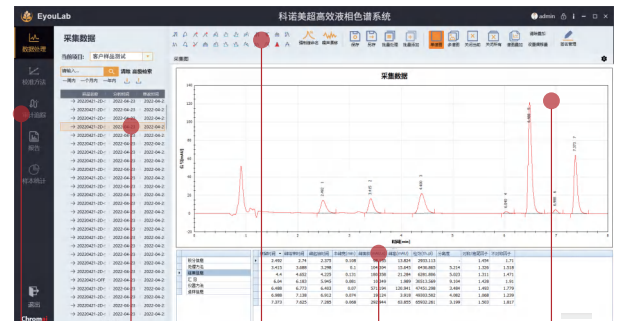
EyouLab Intelligent Data System

Enhances laboratory efficiency with greater accuracy and speed
Effectively reduces operational costs and risks



EyouLab CDS

EyouLab fully complies with FDA 21 CFR Part 11, GMP, GLP, and other regulatory requirements. It offers multiple deployment options, including standalone, networked, and medical versions, with multi-lingual support covering everything from sample preparation to precision medicine. Built on dozens of proprietary technologies, it combines a “smart guided interface + cloud-based data management” to simplify complex experimental operations, ensure data integrity and accuracy, and significantly boost lab capabilities and efficiency—accelerating the transition to intelligent laboratories.



Control Panel

Multi-channel Data Acquisition

Data File List

Complete Attribute Parameters

Automated Sequences

Instrument Monitoring

Audit Trail

Powerful Data Processing

Multi-mode Data Display

Standalone Operation

Remote Access

Archiving Management

Audit Trail

Risk Management

Unified Data Management and Retrieval

Full Regulatory Compliance

Ensures Physical Security of Electronic Data

Easy Remote Access Control

Open-access Network Analysis System

Simple Installation, Startup, and Maintenance

Each acquisition terminal can control up to 4 systems



Leaps

UHPLC System



Leaps Pro

High Throughput UHPLC System



Frontier

UHPLC System

Analytical



Leaps 2D

2D UHPLC System

2D System



Leaps Pro Bio

Bio-Inert LC System

Bio-Inert



Leaps Prep

Preparative LC System

Preparative

Website: www.chromai.com

Chromai · Beijing

Address: 5th Floor, Building 10, Liandong U Valley · Lanbei
Technology Park, No. 3 Xixing Road, Shunyi District, Beijing, China
Tel: (86-10)80429960

Chromai · Suzhou

Address: 5th Floor, Building 5, No. 1268 Jiaotong Road, Wujiang
District, Suzhou, Jiangsu, China
Tel: (86-512)63226066

Email: contact@chromai.com



WeChat
Official Account



LinkedIn
Official Account