



**Chromai**<sup>®</sup>

— 科诺美 —



**Leaps 2D**

Two-Dimensional  
Ultra-High Performance  
Liquid Chromatography System

UHPLC



Innovation for Better Life

# Leaps 2D

Two-Dimensional Ultra-High Performance Liquid Chromatography System

Stay one step ahead in complex analysis

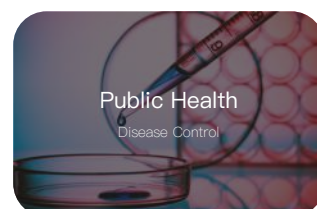
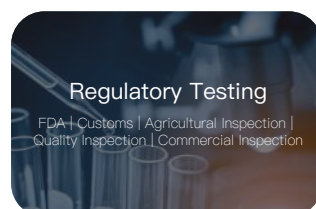
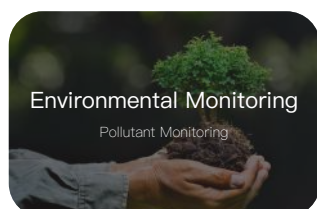


Flexible Configuration

Automated Operation

High Column Capacity

Precisely meets customers' differentiated analytical needs



# A pathway to unlock complex application scenarios

## Simplify pretreatment and multiply analytical efficiency

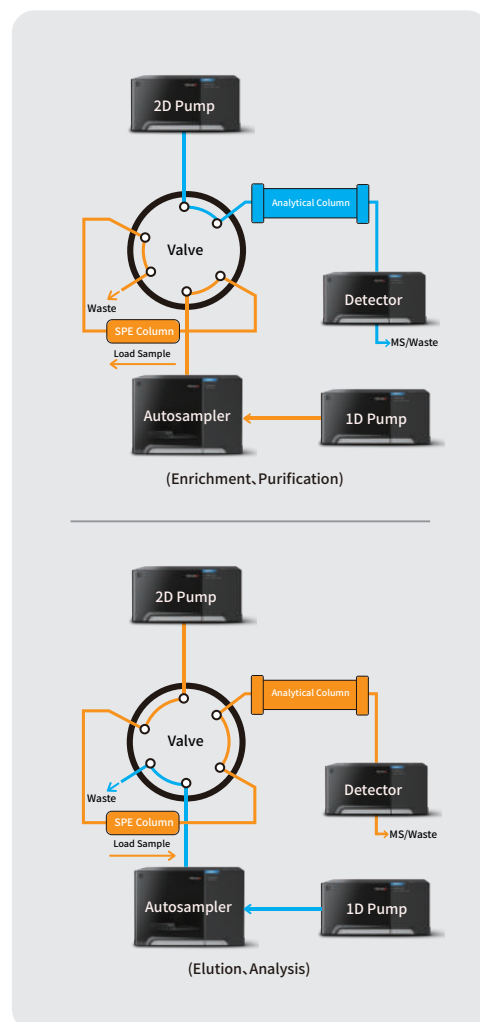
- Advanced UHPLC analytical technology significantly boosts analytical efficiency
- Online cleanup and enrichment simplify pretreatment and greatly improve detection sensitivity
- Meets the needs of analyzing complex matrices such as food matrices, natural products, and therapeutic drug monitoring samples

## Multi-column switching for ideal measurement of complex samples

- With a multi-column switching system, low-concentration samples can be measured and multiple sample types can be analyzed in parallel
- Supports automated transfer between first-dimension and second-dimension columns through automatic switching
- Fully automated sample loading greatly improves usability and eliminates complicated manual intervention
- Analytical results can be rapidly obtained via heart-cutting, multiple heart-cutting, and high-resolution sampling
- Easily enables automatic selection between 1D and 2D modes, choosing the appropriate separation performance based on sample complexity

## Flexible options with perfect upward and downward compatibility

- Interference-free method transfer, seamless upgrades, and worry-free operation
- Excellent module compatibility allows easy upgrades and protects your investment
- Parallel dual columns and series SPE greatly improve efficiency
- Flexible and powerful dual ternary pumps support parallel and independent operation



# Superior Performance, Reliable Results

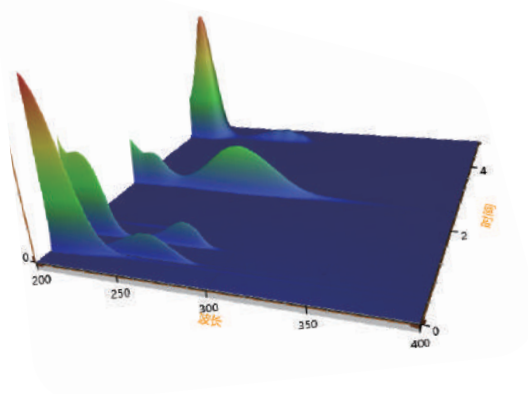
---

## ● Diode Array Detector (DAD)

---



- Pixels: 1024 pixels
- Wavelength Range: 190–800 nm
- Slit Width: 1.2 nm / 6 nm
- Monitoring Channels: 12 channels simultaneously
- Additional Functions: 3D spectra, peak purity
- Flow Cell: Max path length 60 mm



## ● UV-Vis Detector

---



- Optical Design: Automatic switching
- Wavelength Range: 190–900 nm
- Acquisition Rate: Up to 100 Hz
- Linear Range: 2.5 AU
- Standard Features: Wavelength time program, switching, stop-flow scanning
- Maintenance: Easy lamp replacement

## ● Fluorescence Detector

---

- Sensitivity: New optical design
- Stray Light Suppression: Excellent S/N
- Wavelength Range: 200–750 nm / 900 nm
- Sampling Rate: Up to 100 Hz



# EyouLab Intelligent Data System

Enhances laboratory efficiency with greater accuracy and speed  
Effectively reduces operational costs and risks



EyouLab CDS

EyouLab fully complies with FDA 21 CFR Part 11, GMP, GLP, and other regulatory requirements. It offers multiple deployment options, including standalone, networked, and medical versions, with multi-lingual support covering everything from sample preparation to precision medicine. Built on dozens of proprietary technologies, it combines a “smart guided interface + cloud-based data management” to simplify complex experimental operations, ensure data integrity and accuracy, and significantly boost lab capabilities and efficiency—accelerating the transition to intelligent laboratories.



Control Panel

Multi-channel Data Acquisition

Automated Sequences

Instrument Monitoring



Data File List

Complete Attribute Parameters

Audit Trail

Powerful Data Processing

Multi-mode Data Display

Standalone Operation

Remote Access

Archiving Management

Audit Trail

Risk Management

Unified Data Management and Retrieval

Full Regulatory Compliance

Ensures Physical Security of Electronic Data

Easy Remote Access Control

Open-access Network Analysis System

Simple Installation, Startup, and Maintenance

Each acquisition terminal can control up to 4 systems



## Leaps

UHPLC System



## Leaps Pro

High Throughput UHPLC System



## Frontier

UHPLC System

### Analytical



## Leaps 2D

2D UHPLC System

2D System



## Leaps Pro Bio

Bio-Inert LC System

Bio-Inert



## Leaps Prep

Preparative LC System

Preparative

Website: [www.chromai.com](http://www.chromai.com)

### Chromai · Beijing

Address: 5th Floor, Building 10, Liandong U Valley · Lanbei Technology Park, No. 3 Xixing Road, Shunyi District, Beijing, China

Tel: (86-10)80429960

### Chromai · Suzhou

Address: 5th Floor, Building 5, No. 1268 Jiaotong Road, Wujiang District, Suzhou, Jiangsu, China

Tel: (86-512)63226066

Email: [contact@chromai.com](mailto:contact@chromai.com)



WeChat  
Official Account



LinkedIn  
Official Account