



Chromai[®]
— 科诺美 —



Frontier

Ultra-High Performance
Liquid Chromatography System

UHPLC



Innovation for Better Life

Frontier

Ultra-High Performance
Liquid Chromatography System
New Benchmark: Domestic UHPLC

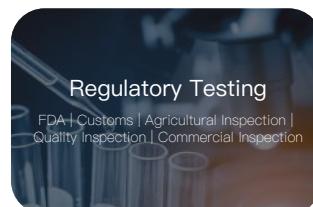
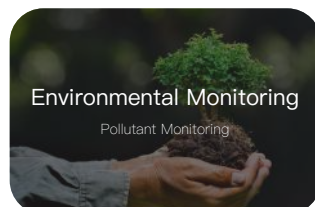


Ultra-High Pressure
Resistance

Application
Expandability

Higher
Throughput

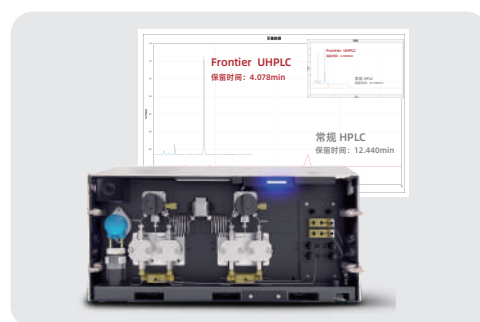
Precisely meets customers' differentiated
analytical needs



Break through injection–efficiency bottlenecks with a benchmark domestic LC platform

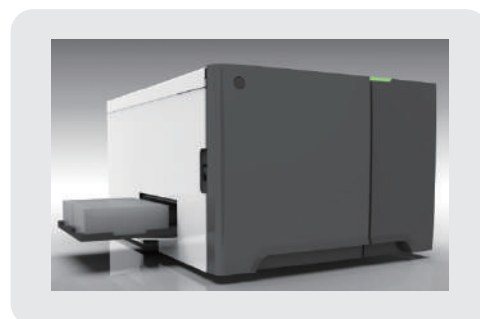
An unparalleled analytical–efficiency experience

- Ultra–high pressure resistance up to 20,000 PSI (1380 bar), delivering outstanding separation efficiency
 - A low–dispersion total–reflection flow cell greatly reduces extra–column volume, improves sensitivity, and fully meets UHPLC analytical requirements
 - High stability and lower flow rates enable long–term, stable, and accurate operation even at small proportions, improving sample delivery performance
-



Superior sample delivery with enhanced experience

- An integral loop autosampler enables non–destructive injection and is ideal for small–volume and micro–scale analysis
 - A contact–type highly integrated cooling system provides a temperature range of 4°C–40°C
 - Repeat–injection functionality eliminates waiting time and enables rapid injection cycles
 - Comes standard with a 4x54 sample tray and is compatible with 4x96 well plates for higher throughput
 - Multiple solvent cleaning options to effectively avoid cross–contamination; equipped with high–strength and long–life
-



flexible scalability for diverse applications

- Expandable to LC–MS configurations for better integration and coordinated control with mass spectrometry systems
 - Open SDK integration supports the development of advanced functions such as ARIES
-

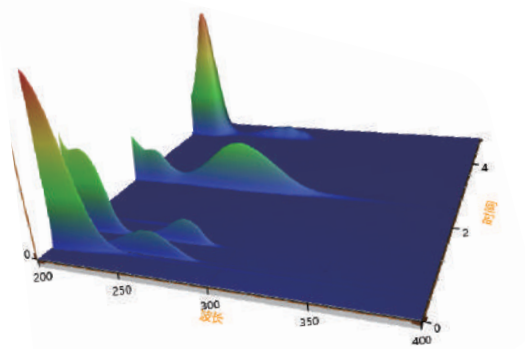


Superior Performance, Reliable Results

● Diode Array Detector (DAD)



- Pixels: 1024 pixels
- Wavelength Range: 190–800 nm
- Slit Width: 1.2 nm / 6 nm
- Monitoring Channels: 12 channels simultaneously
- Additional Functions: 3D spectra, peak purity
- Flow Cell: Max path length 60 mm



● UV-Vis Detector



- Optical Design: Automatic switching
- Wavelength Range: 190–900 nm
- Acquisition Rate: Up to 100 Hz
- Linear Range: 2.5 AU
- Standard Features: Wavelength time program, switching, stop-flow scanning
- Maintenance: Easy lamp replacement

● Fluorescence Detector

- Sensitivity: New optical design
- Stray Light Suppression: Excellent S/N
- Wavelength Range: 200–750 nm / 900 nm
- Sampling Rate: Up to 100 Hz



EyouLab Intelligent Data System

Enhances laboratory efficiency with greater accuracy and speed
Effectively reduces operational costs and risks



EyouLab CDS

EyouLab fully complies with FDA 21 CFR Part 11, GMP, GLP, and other regulatory requirements. It offers multiple deployment options, including standalone, networked, and medical versions, with multi-lingual support covering everything from sample preparation to precision medicine. Built on dozens of proprietary technologies, it combines a “smart guided interface + cloud-based data management” to simplify complex experimental operations, ensure data integrity and accuracy, and significantly boost lab capabilities and efficiency—accelerating the transition to intelligent laboratories.



Control Panel

Multi-channel Data Acquisition

Automated Sequences

Instrument Monitoring



Audit Trail

Data File List

Powerful Data Processing

Complete Attribute Parameters

Multi-mode Data Display

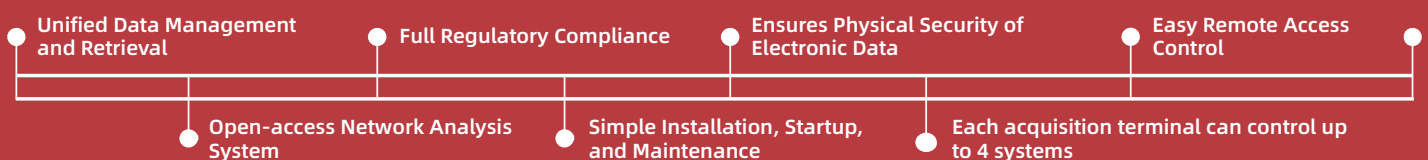
Standalone Operation

Remote Access

Archiving Management

Audit Trail

Risk Management





Leaps

UHPLC System



Leaps Pro

High Throughput UHPLC System



Frontier

UHPLC System

Analytical



Leaps 2D

2D UHPLC System

2D System



Leaps Pro Bio

Bio-Inert LC System

Bio-Inert



Leaps Prep

Preparative LC System

Preparative

Website: www.chromai.com

Chromai · Beijing

Address: 5th Floor, Building 10, Liandong U Valley · Lanbei
Technology Park, No. 3 Xixing Road, Shunyi District, Beijing, China
Tel: (86-10)80429960

Chromai · Suzhou

Address: 5th Floor, Building 5, No. 1268 Jiaotong Road, Wujiang
District, Suzhou, Jiangsu, China
Tel: (86-512)63226066

Email: contact@chromai.com



WeChat
Official Account



LinkedIn
Official Account